

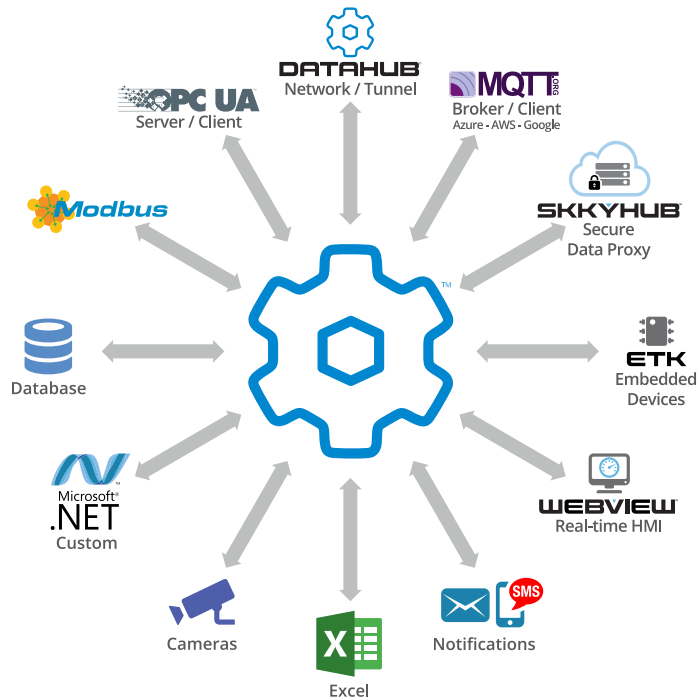


Skkynet DataHub®

REAL-TIME MIDDLEWARE FOR INDUSTRIAL AUTOMATION

Get the most from your industrial data

The DataHub® integrates data from a number of data sources, and provides many ways for you to use the data. There is no system integration product for industrial automation on the market that compares to the DataHub for versatility, power, speed, and ease of use.



Connect to multiple data sources

Make real-time, bidirectional connections to OPC UA and Classic clients and servers. Connect any SQL database, Modbus slave, Excel spreadsheet, and custom programs, Azure IoT Hub, Google IoT, Amazon IoT Core, any standard MQTT client or broker, and embedded systems.

Integrate all data into a single, unified set

Bring data from all sources and any protocol into a single, unified data set. Any selected subset of this aggregated data can be accessed by clients using a supported protocol: OPC UA, OPC Classic, MQTT, Modbus, DDE, TCP, ODBC, HTTP, XML, and more.

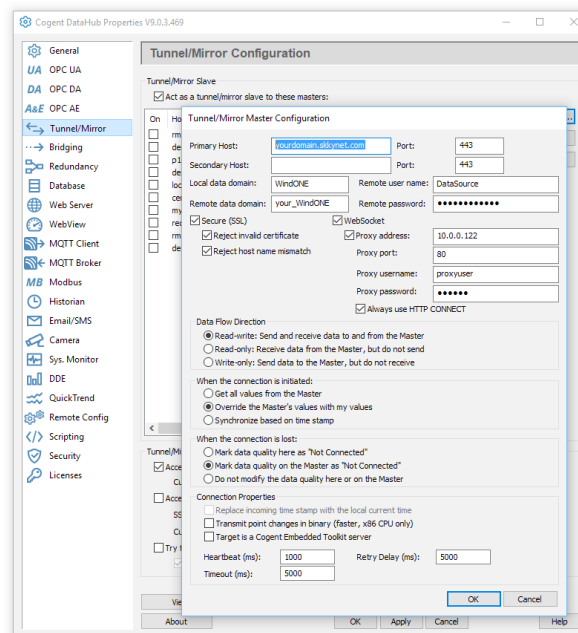
Use your data in any number of ways

- Network OPC servers and clients
- Do monitoring and supervisory control
- Log your data to any SQL database
- Securely connect to any IIoT platform
- Trigger actions based on data changes
- Run real-time analysis in Excel



Why choose the DataHub?

- It's fast – handling 50,000+ data point changes per second
- It's convenient – all features are fully integrated into a single user interface
- It fits in with just about any industrial system
- It saves time and money through easy configuration and robust performance
- Its built-in web HMI (WebView™) lets you to build and view pages in a web browser
- It has a worldwide user base of over 1,600 customers with over 16,000 installations
- Its simple licensing model streamlines system management and deployment
- It connects to SkkyHub™, best-of-breed networking for the Industrial IoT, allowing any combination of in-plant, cloud or hybrid connectivity configuration per dataset



System Information

DataHub supports OPC UA, Classic (DA 3, DA 2, and A&E), as well as Modbus TCP, MQTT, ODBC, DDE, TCP, HTML, and XML. It runs on the following operating systems:

- Windows Server 2016 (64-bit)
- Windows Server 2012 & R2 (64-bit)
- Windows Server 2008 & R2 (64-bit)
- Windows Server 2003 & SP2 (32 & 64-bit)*
- Windows 10 (32 & 64-bit)*
- Windows 8.1 (32 & 64-bit)*
- Windows 7 (32 & 64-bit)*
- Windows XP SP2 (32 & 64-bit)*

* 32-bit operating systems only supported by DataHub versions 7 and 8

SKKYNET softwaretoolbox.com/cogentdatahub sales@softwaretoolbox.com +1 704 849 2773

SkkyNet®, SkkyHub™, DataHub®, the SkkyNet and DataHub logos, WebView™ are either registered trademarks or trademarks used under license by the SkkyNet group of companies ("SkkyNet")