



SCALABLE CUSTOMIZABLE CONNECTIVITY

A fully-configurable OPC server
with visual drag-and-drop
driver creation



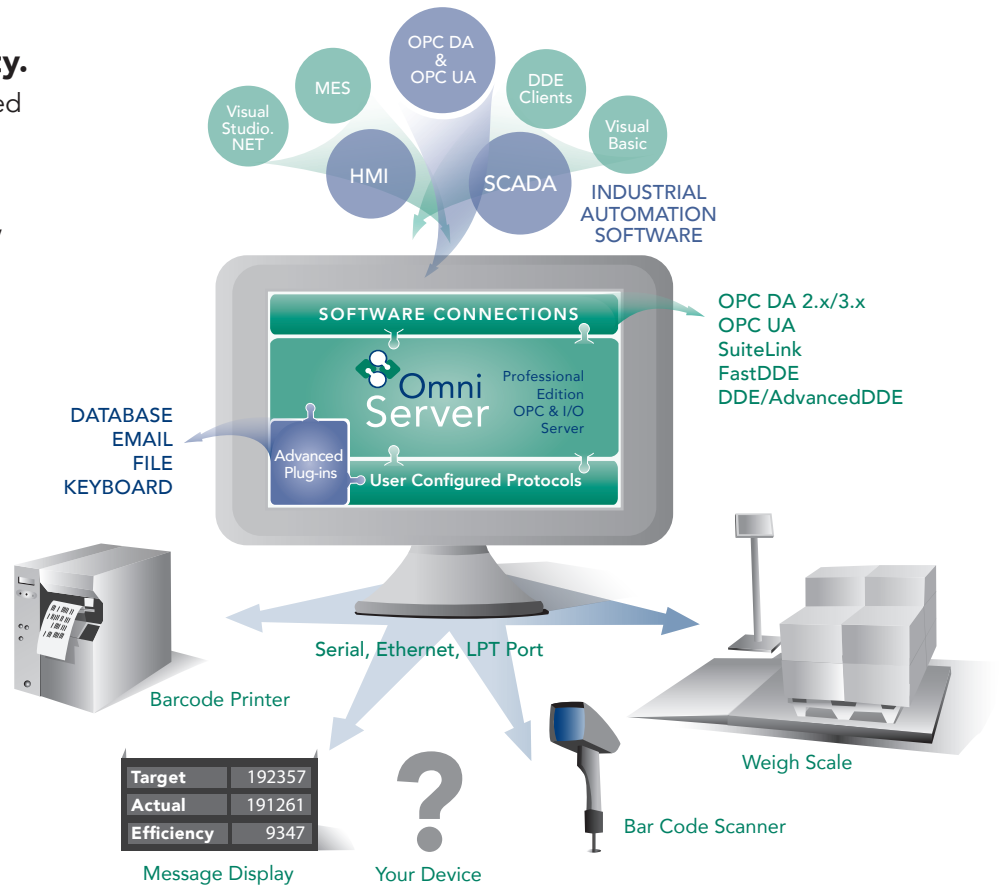
Can't find an off-the-shelf driver to connect your devices?

The gold standard for non-standard device connectivity.

The OmniServer utilizes an advanced configurable protocol creation tool to deliver any serial or ethernet data over to any OPC UA, OPC DA, SuiteLink, or DDE client.

Instead of spending your time on specialized device drivers, implement your protocol in OmniServer and conveniently manage nuances of device communications and data delivery.

Less time spent on device communications means more resources for other important tasks leading to project success.



OMNISERVER CONNECTS NEARLY EVERYTHING

- Barcode scanners
- Micrometers
- Marquees
- Scales
- Controllers
- Lab equipment
- Recorders
- Sensors
- Analyzers
- Printers
- Custom applications
- And more

SERIAL CONNECTIVITY

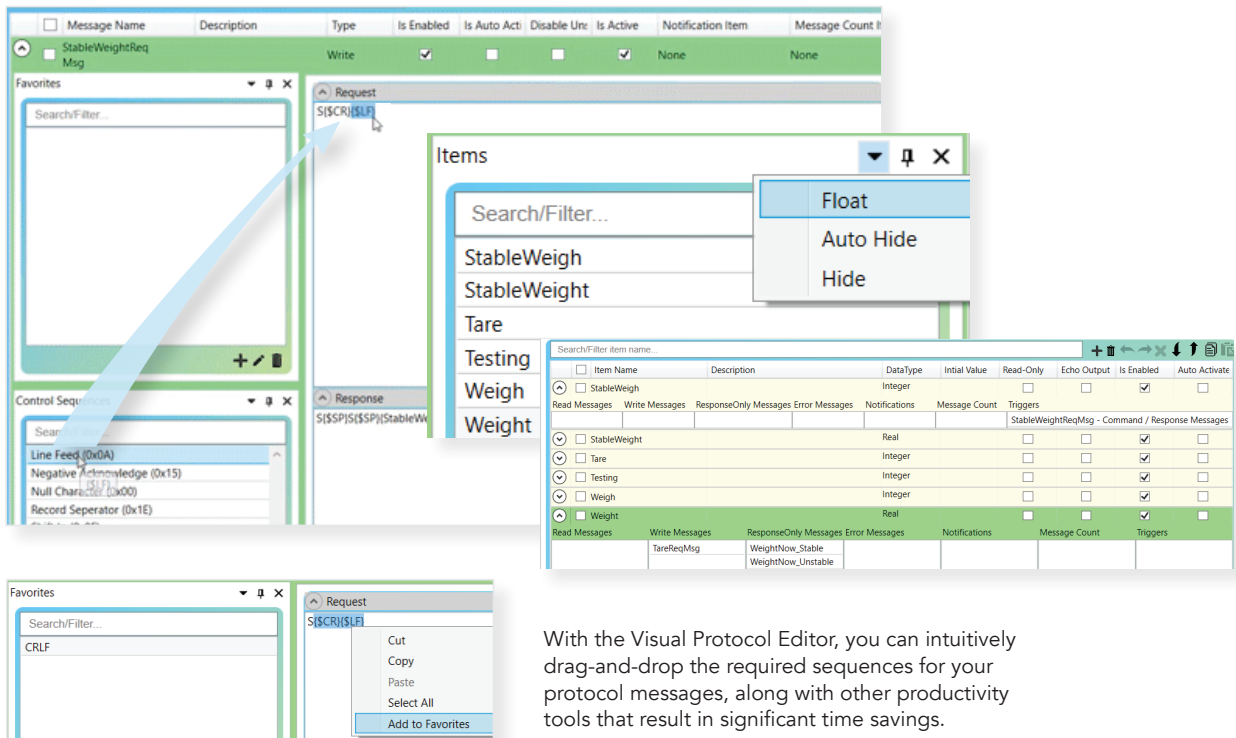
- RS-232 / 422 / 485
- USB (via Virtual COM Port)

ETHERNET

- TCP/IP
- UDP
- TELNET
- Ethernet-encapsulation

ADVANCED PLUG-INS

- Automatic Email/SMS
- Text/CSV Files
- ODBC Data Logging
- Keyboard Wedge



With the Visual Protocol Editor, you can intuitively drag-and-drop the required sequences for your protocol messages, along with other productivity tools that result in significant time savings.

Say goodbye to custom-coded OPC servers

OmniServer's Visual Protocol Editor (VPE) makes writing code a thing of the past. Realize up to 40 percent time savings with the drag-and-drop feature to build protocol messages, table-based configuration, and other components.

- Efficient drag-and-drop to create protocol messages
- Hide unnecessary components and filter views for a cleaner protocol creation and editing experience
- Eliminate repetitive protocol segments with user-definable "Favorites"
- Convenient table-based configuration with CSV import/export for common components (items, topic variables, register numbers, plus)
- Easily locate protocol components and messages with filtered searching

Features

OMNISERVER ...

- Is configured via drag-and-drop and dialog boxes
- Connects to a wide variety of devices
- Has reusable protocol configurations across systems
- Allows a combined total of 2048 topics, devices, protocols and clients for connectivity to hundreds of devices
- Supports ASCII and binary data streams
- Includes [step-by-step tutorials](#) and world-class support
- Includes sample protocol templates
- Supports solicited and unsolicited messaging
- Is modem compatible
- Supports serial protocols (RS-232 / 422 / 485), including USB-mapped devices
- Connects ethernet protocols (TCP, UDP, TELNET), including serial devices via encapsulation
- Provides diagnostics to view raw data to/from your device
- Logs sends and receives
- Provides polling statistics
- Is OPC Independent Test Lab Certified for compliance

SYSTEM REQUIREMENTS

- 2.0 Ghz processor
- 1 GB RAM
- 150 MB HD space
- Ethernet card

32-Bit (x86) OS

- Windows Server 2008 / 2007 Families (plus R2 editions)
- Windows 10 / 8.1 / 8 / 7 (Ultimate and Professional)

LICENSING, DEMOS AND CONSULTING

- Licenses include first year support/maintenance; renewable annually
- No tag limits; affordable software license key
- [Optional Starter Kit](#) includes two hours of consulting
- [Protocol consulting services](#) available to ensure success
- Optional hardware license dongle
- Three editions (see below)
- Volume discounts
- [Fully-functional trial version](#)

64-Bit (x64) OS

- Windows Server 2019 / 2016 / 2012 / 2008 / 2007 Families (plus R2 editions)
- Windows 10 / 8.1 / 8 / 7 (Ultimate and Professional)

| OMNISERVER CAPABILITIES | OmniWedge P/N 41242111-N | OmniServer P/N 41242109-N | OmniServer Pro P/N 41242110-N |
|--|-----------------------------|------------------------------|----------------------------------|
| Fully configurable protocol engine with samples and industry standard client interfaces for connecting to all major HMI/ SCADA/MES systems | X | X | X |
| Rapid protocol creation via drag-and-drop in the Visual Protocol Editor (VPE) reduces protocol design effort by up to 40 percent | X | X | X |
| Database Advanced Plug-in logs data to any ODBC-compliant database (SQL, Access, MySQL, etc.) | | | X |
| File Advanced Plug-in logs data to text/CSV files | | | X |
| Email Advanced Plug-in sends data as custom email | | | X |
| OmniServer data sent to other applications as "simulated" keyboard input | X | | X |

Data integration

Connecting the unconnected

Every plant has the issue of devices lacking necessary drivers which would tie them into information systems or machine user interfaces.

OmniServer solves the problem. A configurable OPC server, OmniServer is an off-the-shelf, easy-to-use, point-and-click configuration interface for implementing custom protocols. With no custom code, OmniServer can be configured to talk to virtually any non-standard device.



See how other users like you have used OmniServer to integrate their non-standard systems and devices in our [real-world user stories](#).



OPC Foundation Independent Test Lab Certified for compliance

OmniServer passes OPC Foundation's rigorous independent lab certification process insuring reliable interoperability with other OPC products.



Ready to get started?

OmniServer is available from your local Software Toolbox channel partner. [Contact us](#) for assistance with connecting to a partner in your area.

CLIENT INTERFACES

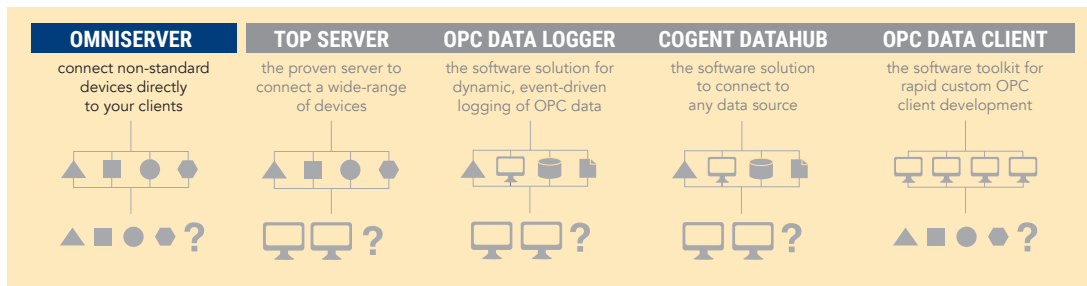
- OPC Unified Architecture (DA Profile)
- OPC Data Access (1.0a / 2.0 / 2.05)
- SuiteLink
- DDE and FastDDE

CLIENT INTEROPERABILITY

- AVEVA formerly Wonderware InTouch, System Platform and Historian
- Rockwell RSView32 and FactoryTalk View
- Siemens SIMATIC WinCC
- OSIsoft PI System
- Indusoft Web Studio
- GE Digital Proficy HMI/SCADACimplicity, iFIX, and Historian
- Iconics GENESIS
- Elipse
- Ignition SCADA
- Cogent Datahub WebView
- Canary Labs Historian
- Visual Basic
- Visual Studio.NET
- And many others



OmniServer is one of a variety of products offered by Software Toolbox



CLIENTS AROUND THE WORLD turn to Software Toolbox for our variety of industrial automation software. Combined with our knowledge of how our products work with other enterprise software using open standards, clients profit in many ways.

Coupled with our world-class support, this unique combination delivers value for your projects throughout the full life-cycle of your automation journey.

softwaretoolbox.com/omniserver



info@softwaretoolbox.com
www.softwaretoolbox.com

TOLL FREE: 888-665-3678
GLOBAL: 704-849-2773
FAX: 704-849-6388